

City of Bayfield

Office of the Clerk and Mayor
125 South First Street - P.O. Box 1170
Bayfield, Wisconsin 54814
Phone (715) 779-5712
cityclerk@cityofbayfield.com

GREENWOOD CEMETERY RATES: September 14, 2017

LOT PRICES (Perpetual Care of \$150.00 is in addition to Grave Space Prices)

		Grave Price + Perpetual Care
Resident	1 Grave Space	\$200 + \$150 = \$350
Resident	2 Grave Spaces	\$400 + \$300 = \$700
Non-resident	1 Grave Space	\$500 + \$150 = \$650
Non-Resident	2 Grave Spaces	\$900 + \$300 = \$1200
Perpetual Care Fee	One Time Fee – Per Space	\$150

NOTE: If perpetual care has never been paid on old lot, charge a onetime \$150.00 fee at time of interment to cover all spaces in lot.

DEFINITIONS:

Resident: Anyone dwelling within the City of Bayfield, the Town of Bayfield or the Town of Russell. A resident leaving the City or either Town for a nursing home facility or hospital would retain their residence status with regard to the cemetery rates.

Non Resident: Someone other than a resident.

INTERMENT PRICES	RESIDENT	NON RESIDENT
Burial (Monday-Friday)	\$575	\$800
Burial (Sat.-Sun.-Holiday)	\$675	\$900
Cremation (Monday-Friday)	\$250	\$350
Cremation (Sat.-Sun.-Holiday)	\$275	\$375
Double Cremation (Monday-Friday) 2 urns or oversized cremation box	\$350	\$450
Double Cremation (Sat.-Sun.-Holiday) 2 urns or oversized cremation box	\$375	\$475
Child Burial (Monday-Friday)	\$425	\$525
Child Burial (Sat.-Sun.-Holiday)	\$450	\$550
Oversized Casket (Additional Fee)	\$150	\$150
Winter Burials (Additional Fee) November 1 - April 30 <i>Can be waived at PWD discretion if no frost.</i>	\$225	\$300
REMOVAL CHARGES	RESIDENT	NON RESIDENT
To remove and refill	\$775	\$1,000
To rebury	\$575	\$800
Dirt removal & replacement from grave site for service	\$200	\$300
SEXTON CHARGES		
Burials		\$300
Oversized Burials		\$400
Child Burials		\$200
Cremation		\$75
Double Cremation (2 urns or oversized cremation box)		\$125
Dirt Removal and Replacement for grave side service		\$75

ADDITIONAL COMMENTS:

- Rates for Calvary Cemetery (Catholic) can be obtained by calling the Holy Family Church at 715-779-3316.
- 48 hours (after City has received burial information including location) is needed to insure site will be prepared on time.
- No markers can be placed in the Greenwood Cemetery without the City's or City Representative's approval.

LOCAL FUNERAL HOMES:

Bratley Family Funeral Homes & Crematory

- Bratley Funeral Home.....715-373-2283-Washburn
- Frost Home for Funerals..... 715-682-2929-Ashland
- Roberts Funeral Home & Crematory.... 715-682-6616-Ashland

Mountain Funeral Home.....715-682-5533-Ashland (715) 274-2501-Mellen

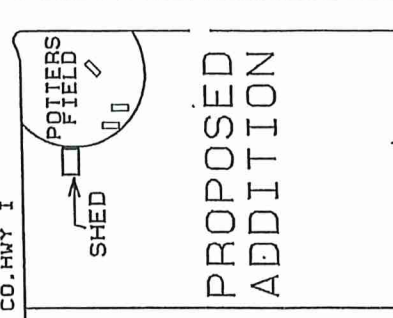
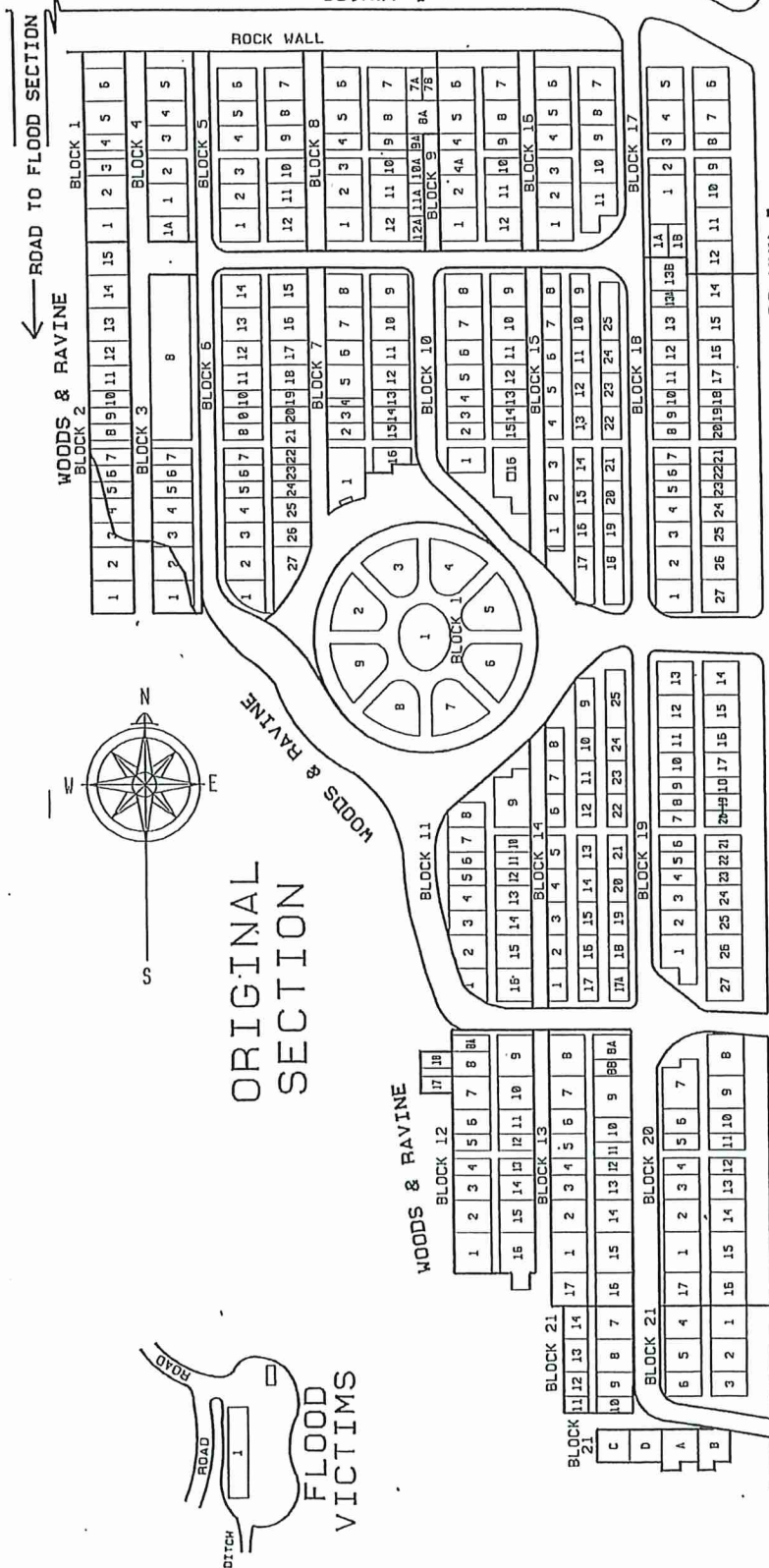
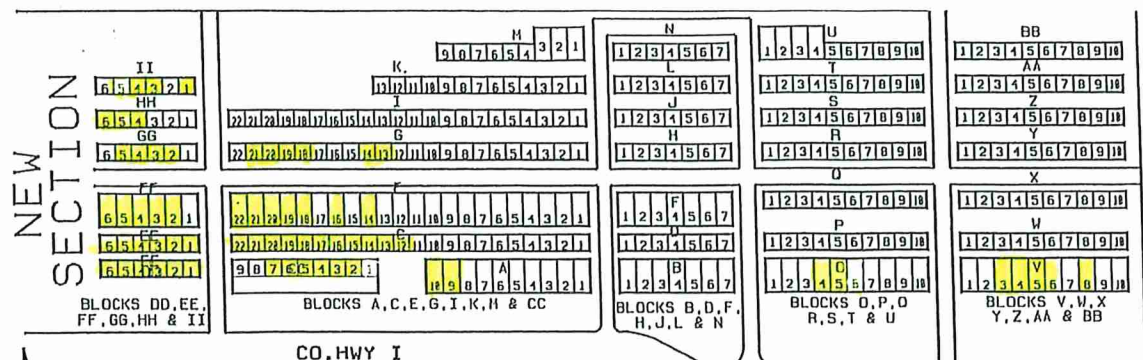
**POLICY FOR PLACEMENT OF STONES
GREENWOOD CEMETERY**

- 1) One person will be in charge of all placements of stones in the cemetery. His name and telephone number will be available at the City Clerk's office.
- 2) The following conditions will apply to placing of stones:
 - a. Set all stones to match existing stones in the same lot.
 - b. New companion and individual markers must be surrounded with a minimum of 5" of concrete.
 - c. All Hickey and Wedge must be set on a 4" thick concrete base at least 5" larger on all sides than the stone's base.
 - d. All monuments must be placed on a 6" thick concrete base at least 5" larger on all sides than the base of the stone.
- 3) Any marker that is not a regular cemetery marker must first get approval from the Cemetery Board and then be placed under the supervision of the person in charge.

CHARGES FOR PLACEMENT OF STONES:

	Rates
Bronze Government Marker on Cement Base from Eagle Vault	\$115
Individual and Companion Marker	\$125
Base for Hickey and Wedge	\$135
Base for Monuments	\$175
Supervision of Placement of other stones	\$80

For more information on the policies and charges for the placement of stones and markers at the Greenwood Cemetery, please contact:



PROPOSED ADDITION

**M
A
P**

Greenwood Cemetery
Bayfield, Wisconsin

GRAVE DETAIL ORIGINAL SECTION	GRAVE DETAIL NEW SECTION
8765 1234	4 W

Drawn by: Cemetery Updating Services
P.O. Box 1234
Winona, MN 55967 (507) 453-0811

Date: 09/01/2014
File Name: WIFMAP

REVISED 1-2-2005